



## 5 Powis Close, Newport

£270,000 Freehold

3 bedroom town house • Three floors • Ready to move in • En-suite bathroom • Spacious living room • Bright kitchen diner • Bathroom with overhead shower • Downstairs W.C. • Garage and separate off road parking • Quiet location



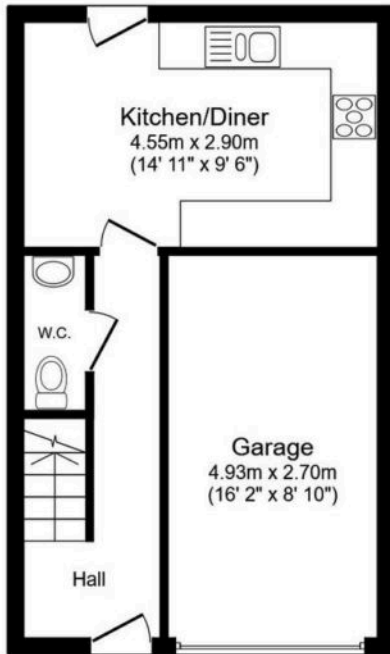
Council Tax band: E

Tenure: Freehold

EPC Energy Efficiency Rating: C

EPC Environmental Impact Rating: D





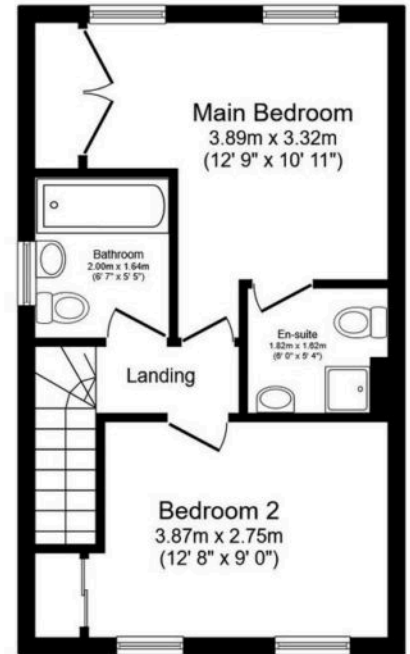
### Ground Floor

Floor area 36.2 sq.m. (389 sq.ft.)



### First Floor

Floor area 36.2 sq.m. (389 sq.ft.)



### Second Floor

Floor area 36.2 sq.m. (389 sq.ft.)

**Total floor area: 108.5 sq.m. (1,168 sq.ft.)**

This floor plan is for illustrative purposes only. It is not drawn to scale. Any measurements, floor areas (including any total floor area), openings and orientations are approximate. No details are guaranteed, they cannot be relied upon for any purpose and do not form any part of any agreement. No liability is taken for any error, omission or misstatement. A party must rely upon its own inspection(s). Powered by [www.Propertybox.io](http://www.Propertybox.io)

You can include any text here. The text can be modified upon generating your brochure.