



27 Castell Coch Drive, Newport

£250,000 Freehold

- End of terrace home family home
- Quiet cul-de-sac location
- Three bedrooms
- En-suite shower room
- Bathroom with bath and overhead shower
- Spacious lounge
- Modern kitchen diner
- Garden with decked area
- Garage
- Close to supermarket and schools



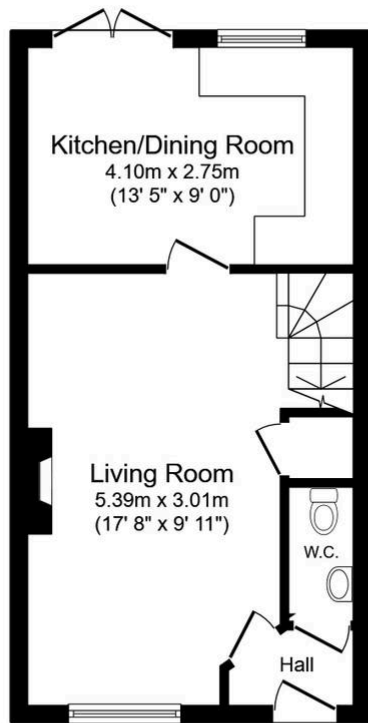
Council Tax band: D

Tenure: Freehold

EPC Energy Efficiency Rating: D

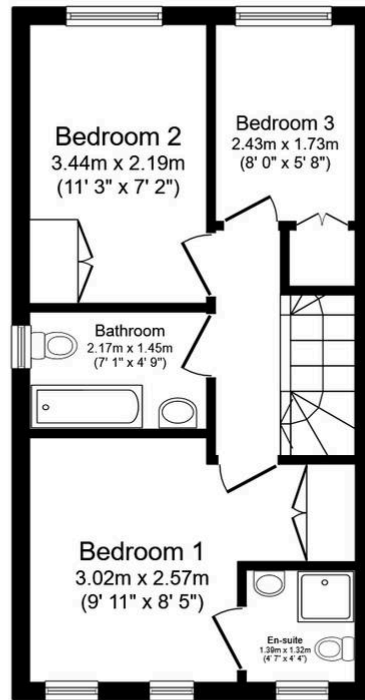
EPC Environmental Impact Rating: D





Ground Floor

Floor area 32.6 sq.m. (351 sq.ft.)



First Floor

Floor area 32.6 sq.m. (351 sq.ft.)

Total floor area: 65.2 sq.m. (702 sq.ft.)

This floor plan is for illustrative purposes only. It is not drawn to scale. Any measurements, floor areas (including any total floor area), openings and orientations are approximate. No details are guaranteed, they cannot be relied upon for any purpose and do not form any part of any agreement. No liability is taken for any error, omission or misstatement. A party must rely upon its own inspection(s). Powered by www.Propertybox.io

You can include any text here. The text can be modified upon generating your brochure.